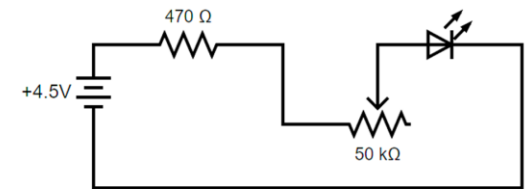
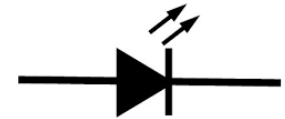
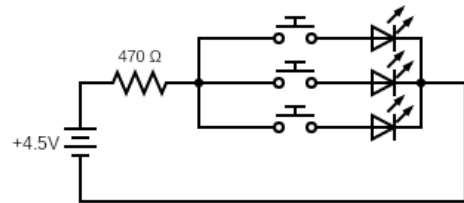
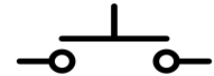
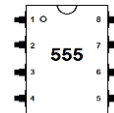
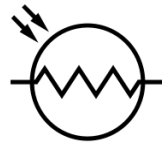
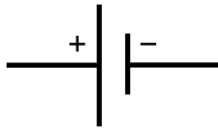
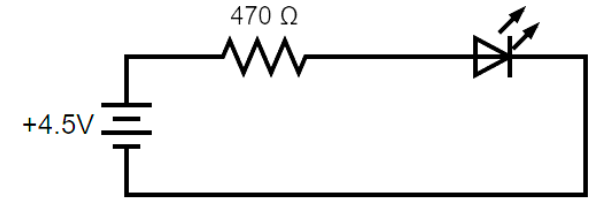
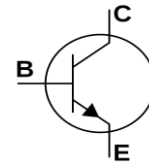
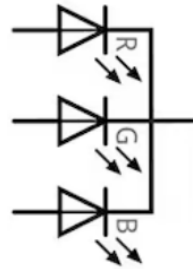
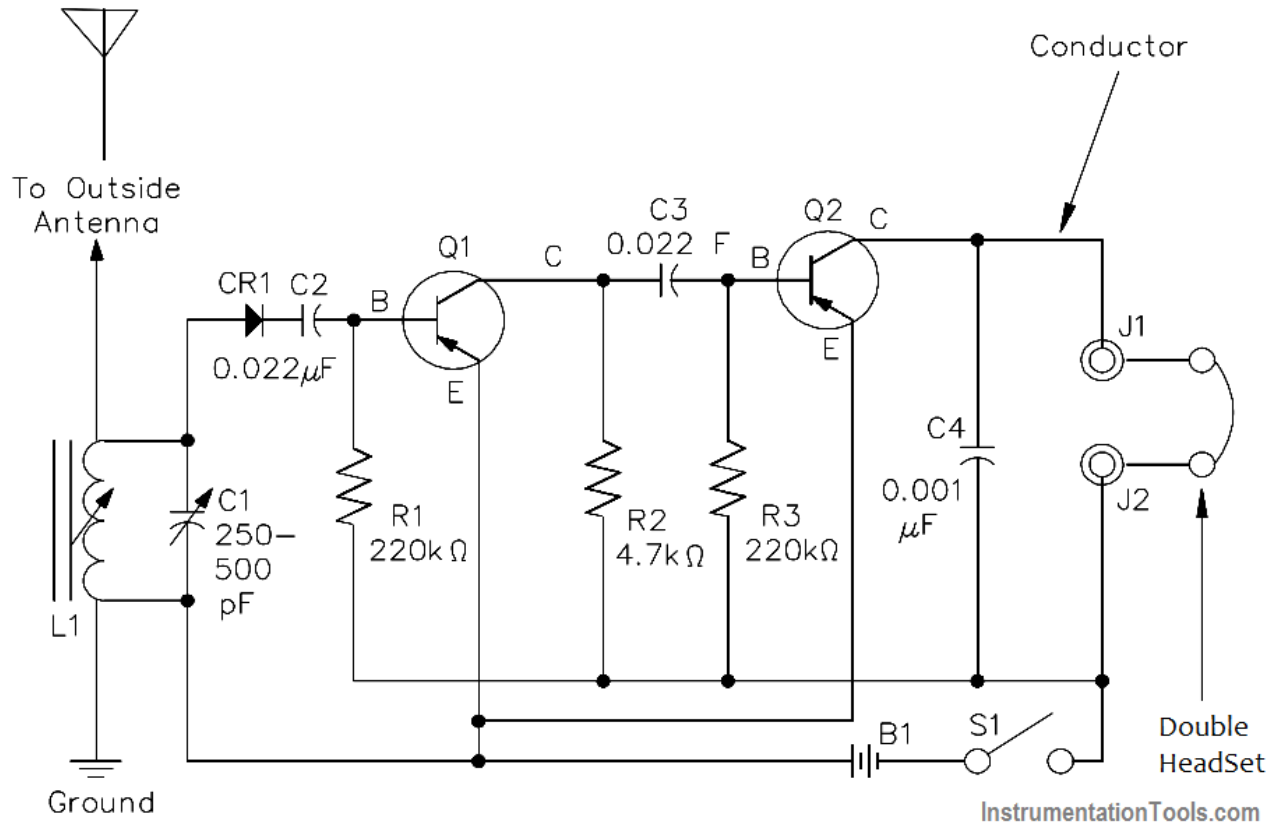


Circuit Symbols and Diagrams

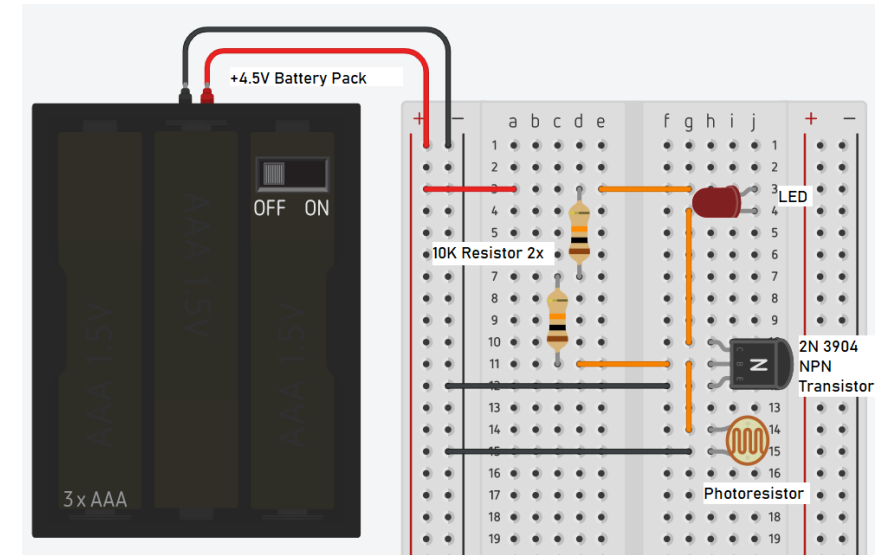
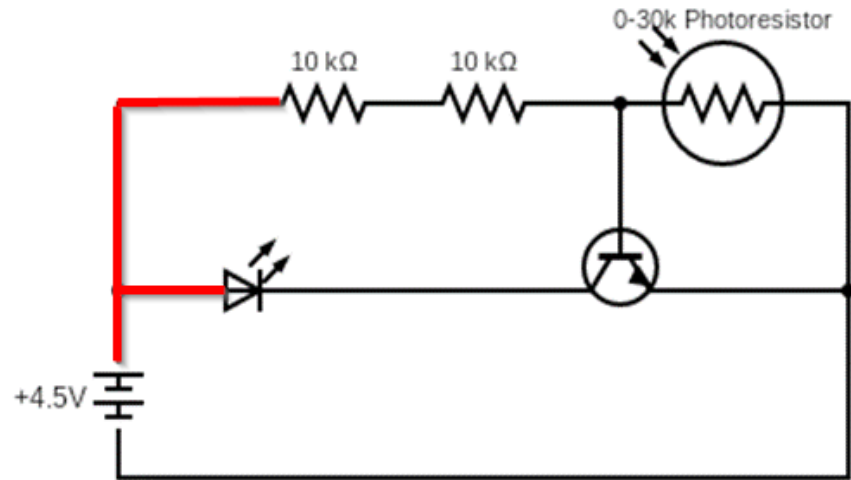


What are Circuit Diagrams?



A circuit diagram is like a map of a circuit.

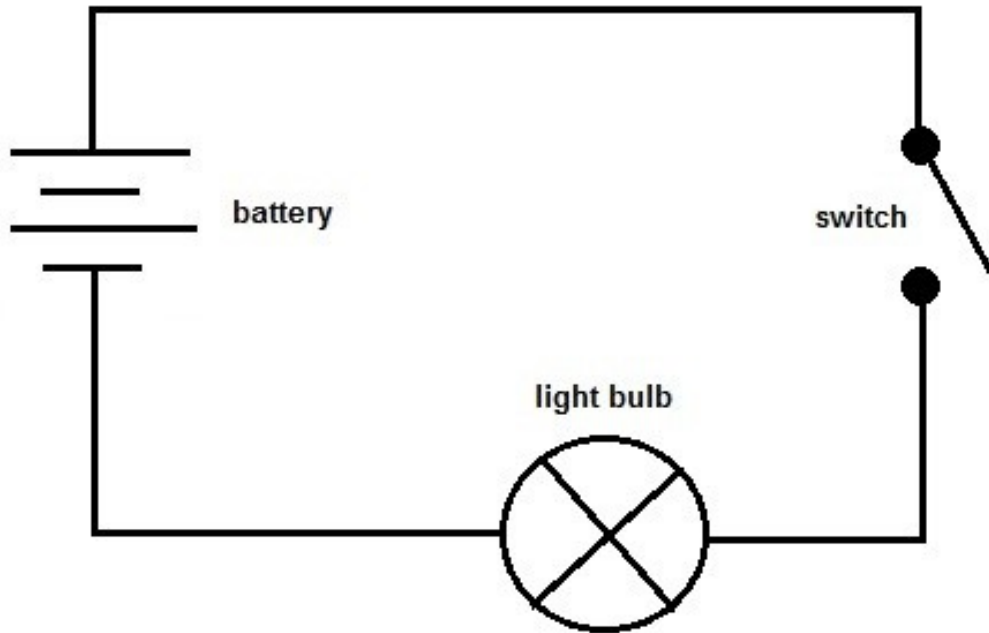
Introduction to Circuit Diagrams



Schematic diagrams give a universal way to communicate what our circuits look like. Here you see a drawing that shows how you might build the circuit from the schematic on a breadboard.



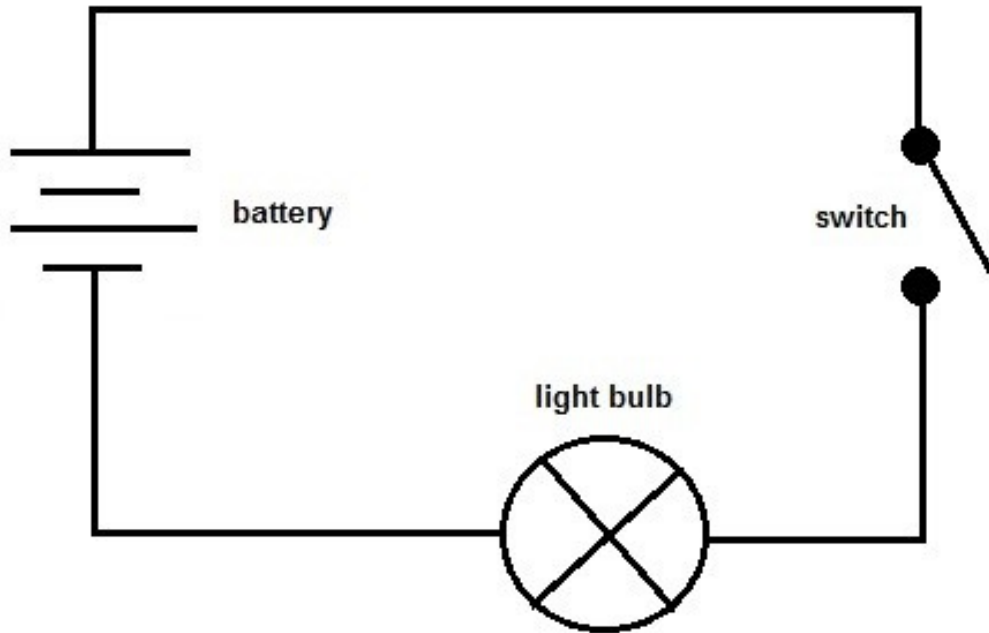
Introduction to Circuit Diagrams



Circuit Diagrams use **symbols** to represent the components.



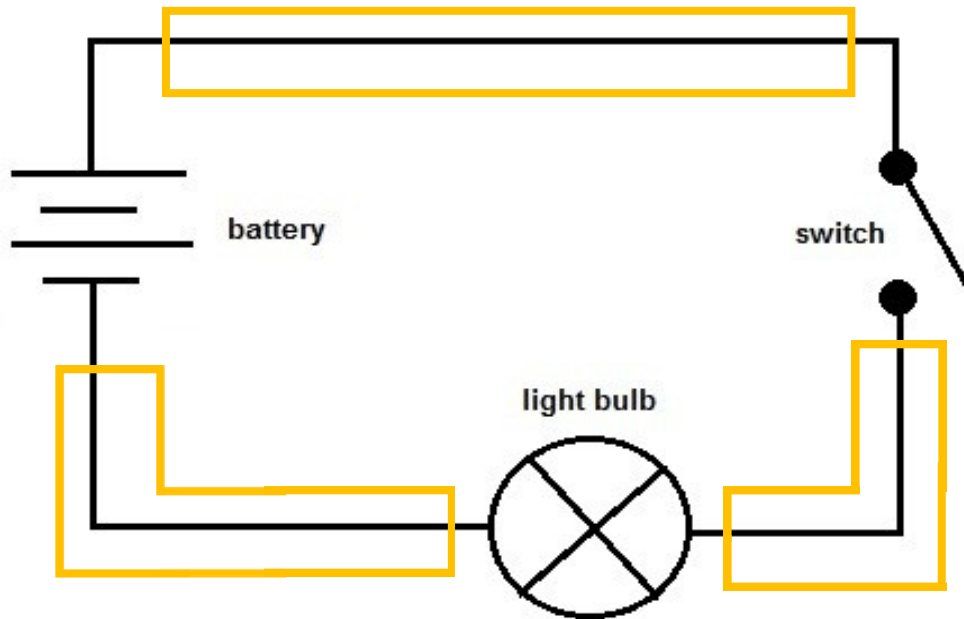
Introduction to Circuit Diagrams



The symbols are connected with lines(wires) that show you how the current flows through the components creating a circuit.



What are Nodes?

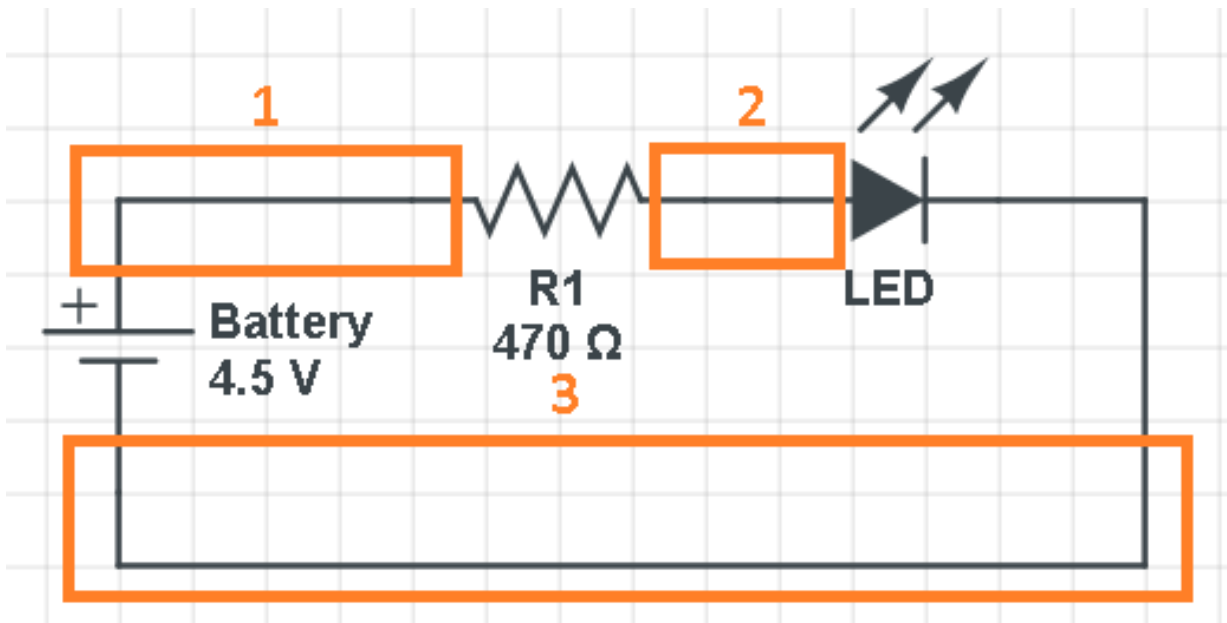


The orange boxes represent **nodes** of our circuit. A node is anywhere two or more components are connected to each other. In this circuit, each node has two components.

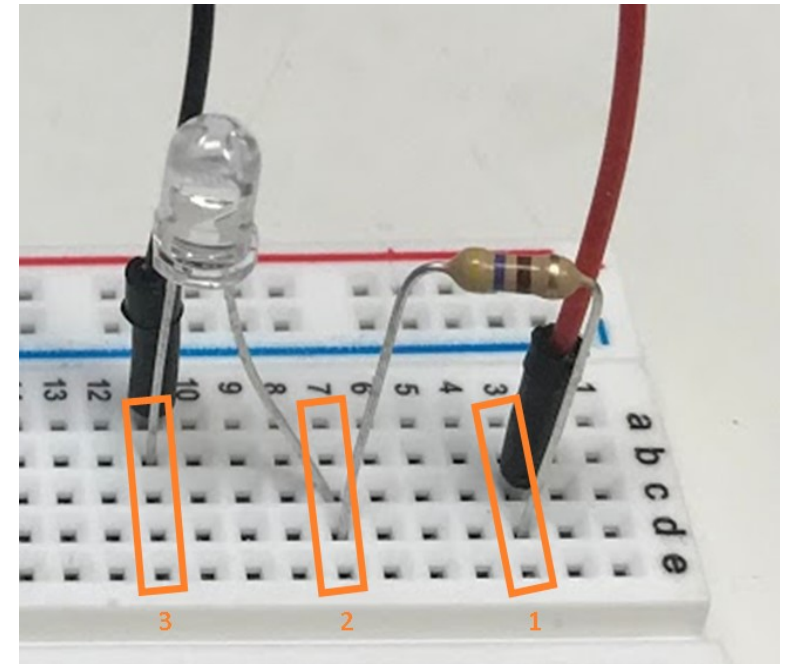


What are Nodes?

What nodes look like on schematic

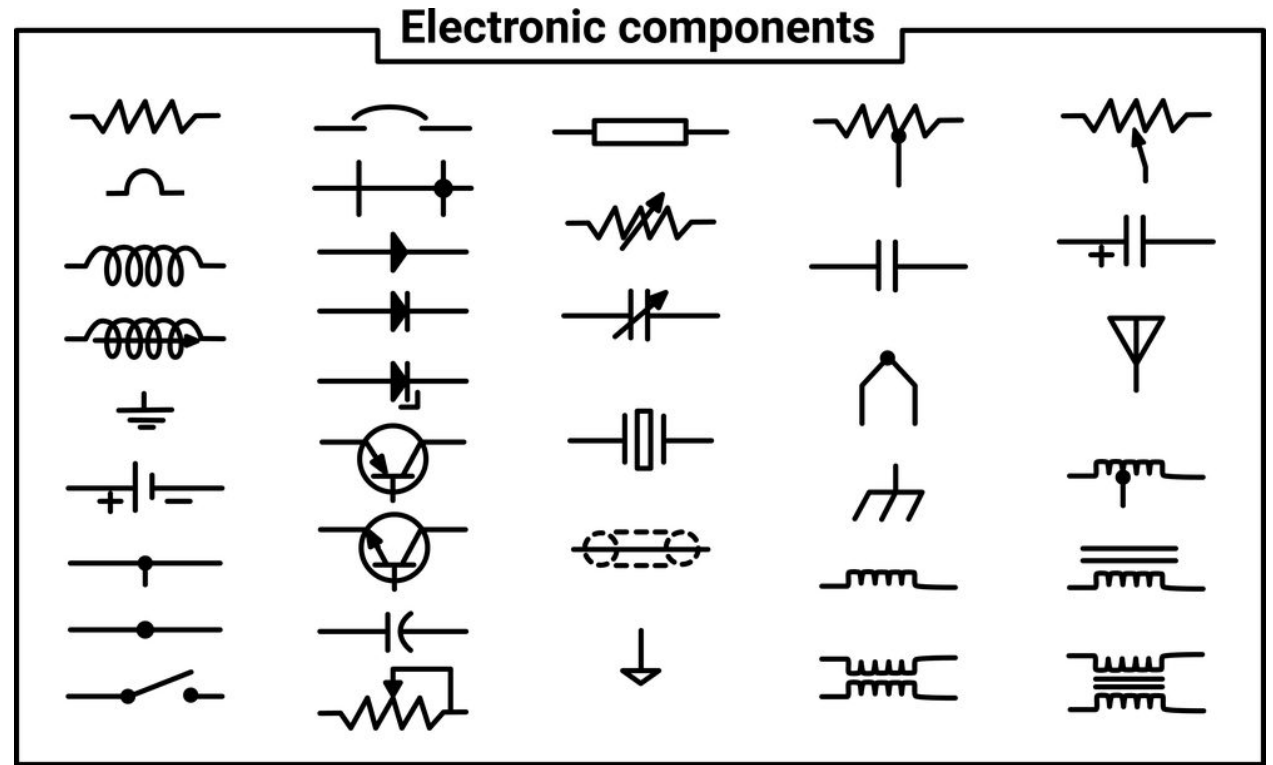


What nodes look like on the built circuit.



Circuit Symbols

All circuit symbols are standardized so you can read them on any circuit diagram in the world.



Common Symbols



Wire



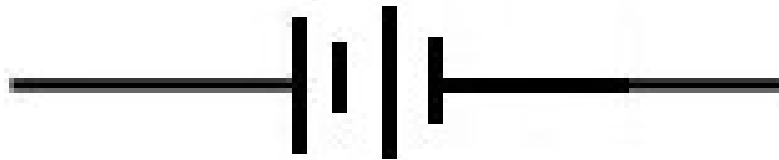
Common Symbols



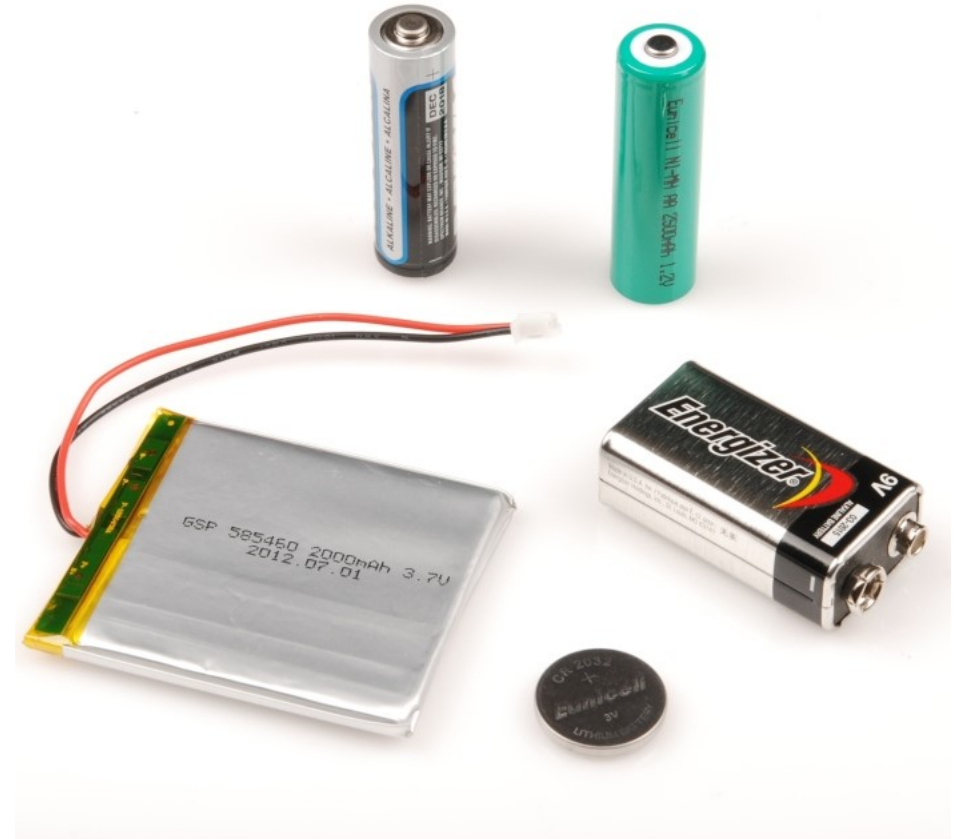
Resistor



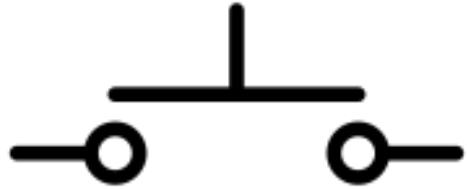
Common Symbols



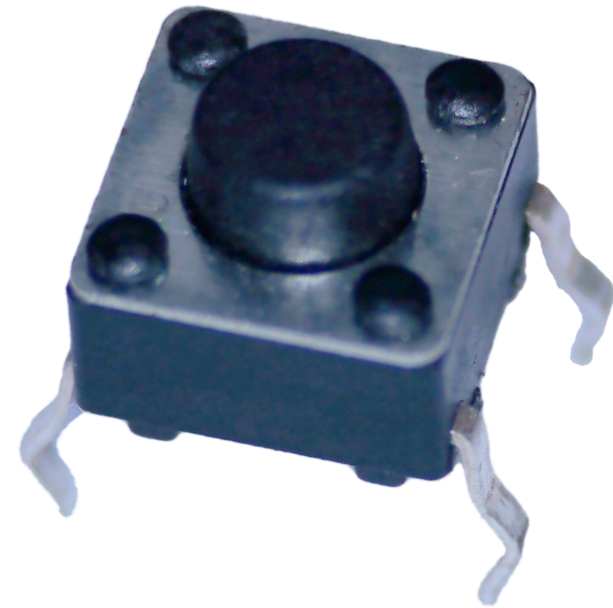
Battery



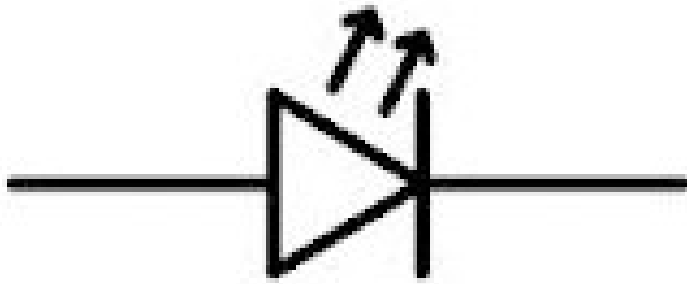
Common Symbols



Pushbutton Switch



Common Symbols



LED (Light Emitting Diode)



Common Symbols



Potentiometer



Common Symbols



Capacitor



SQUARE BRAIN

Circuit Symbols &
Diagrams

