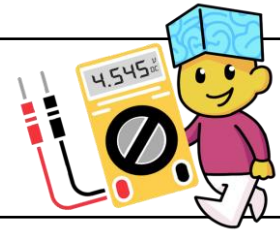







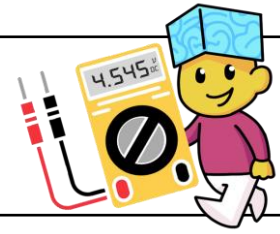
Multimeter Vocabulary








VOCABULARY WORD	DEFINITION	PICTURE
Multimeter	A tool used to measure electrical values in a circuit. All multimeters share similar parts and functionalities and can be either analog or digital.	
Probes	Red or Black wires that are plugged into the multimeter and are used to take measurements from components or circuits.	
Leads	The metallic ends of the probes that touch the components or circuits being measured.	
Ports	The holes on the multimeter where the probes are plugged into. There are 3 ports on the multimeter provided in the kit.	
Display	Shows the numeric value for the electric property being measured.	



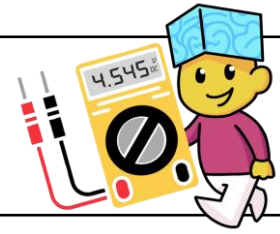
Multimeter Vocabulary



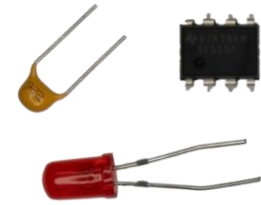
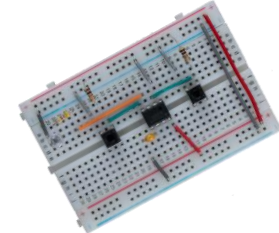


VOCABULARY WORD	DEFINITION	PICTURE
Selection Dial	Located in the middle of the Face of the multimeter, it can be turned to various positions allowing for the testing of different electrical properties by the multimeter.	
Volt (V)	A unit of electrical potential difference or voltage. <i>Direct Current Voltage (DCV)</i> and <i>Alternating Current Voltage (ACV)</i> are the two types of electrical voltage measured by the multimeter.	
Direct Current Voltage (DCV)	A type of voltage that is a constant, unidirectional flow of electrical current. DC Voltage is supplied by batteries.	
Alternating Current Voltage (ACV)	A type of voltage that periodically changes direction and magnitude. AC voltage is supplied by a wall socket.	
Ohm (Ω)	A unit of electrical resistance. When measuring resistance with the multimeter, all displayed numbers are in Ohms (Ω).	



Multimeter Vocabulary



VOCABULARY WORD	DEFINITION	PICTURE
Ampere (A)	A unit of electrical current. When the dial on the multimeter is in the DCA (<i>Direct Current Amperage</i>) position, the current passing through a circuit or component can be measured.	
Continuity	The measure of whether two points are electrically connected. The multimeter makes a beep when there is continuity!	
Component	A part of an electric circuit that affects the flow of electricity. Examples of components include: capacitors, LEDs, and 555 Timers.	
Circuit	A path that electrical current follows. There are 20 circuit builds in the Starter Circuit Kit.	
Oscilloscope	An oscilloscope is a tool that graphically displays varying electrical voltages over time.	